



CONTAINER LOADING WORKSHOP 20 SEPTEMBER 2011

Areas Covered



- **Expansion & Capacity Update**
- **System Overview**
- **Operational Performance Update**
- **Volume Overview**

Expansion & Capacity Update

Project Update & Capacity Created

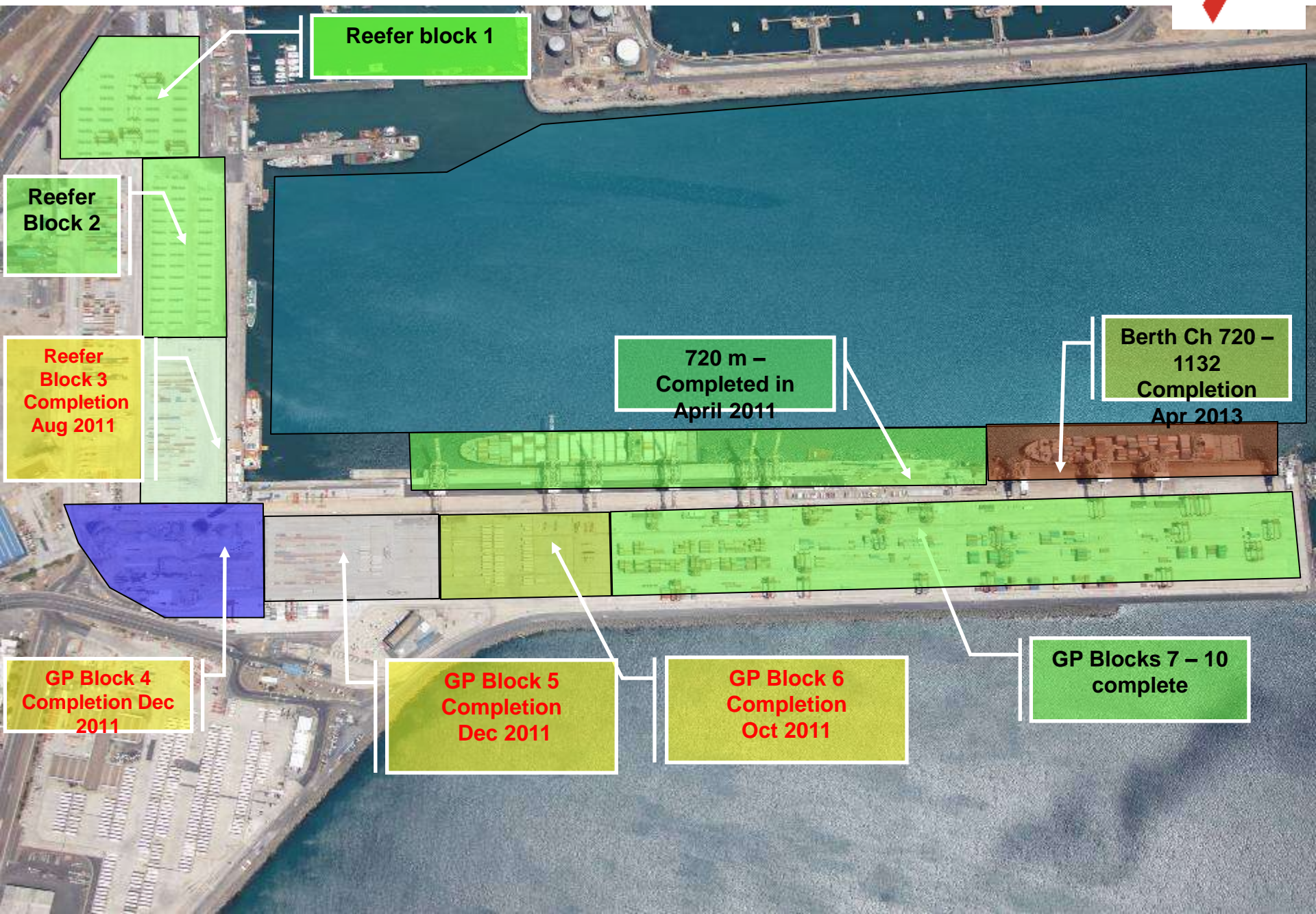


AREA		Before Expansion i.e. Before 2008	After Expansion, i.e. End 2012	Current Status as @ Aug 2011
PORT	Waterside - Draft	4 Berths - 12.8 Meters	4 Berths - 15.5 Meters	2.5 Berths handed over. 15.5 Meters
	Waterside - Berth	2 Noel + 4 Demag = 6 Cranes	8 Super Post Panamax Liebherr	6 Super Post Panamax Liebherr
	Landside Support	30 Straddle Carriers	28 RTG + 4 Straddle Carriers	28 RTG + 4 Straddles
	Internal Haulers	47 Haulers	47	47
	Trailers	59	59	59
	MT Stackers	5	6	5
	Stack area (Slots)	4371	6119 (slots)	2670 Ground slots GP stack space. Reefer G/S 1022 Plug points 3753
Marine	Tugs	3	3	3
	Pilot Boat	1	1	1
	Entrance Channel	14 Meters	16 Meters	16 Meters
Capacity	Reefers Plug Points	1920	3753	3753
	Throughput Estimate	800k Teu	1.4 M Teu	800k Teu

Detailed Visual Illustration



HIGH LEVEL OVERVIEW:



Reefer block 1

Reefer Block 2

Reefer Block 3
Completion Aug 2011

720 m –
Completed in
April 2011

Berth Ch 720 –
1132
Completion
Apr 2013

GP Block 4
Completion Dec 2011

GP Block 5
Completion Dec 2011

GP Block 6
Completion Oct 2011

GP Blocks 7 – 10
complete

System Overview

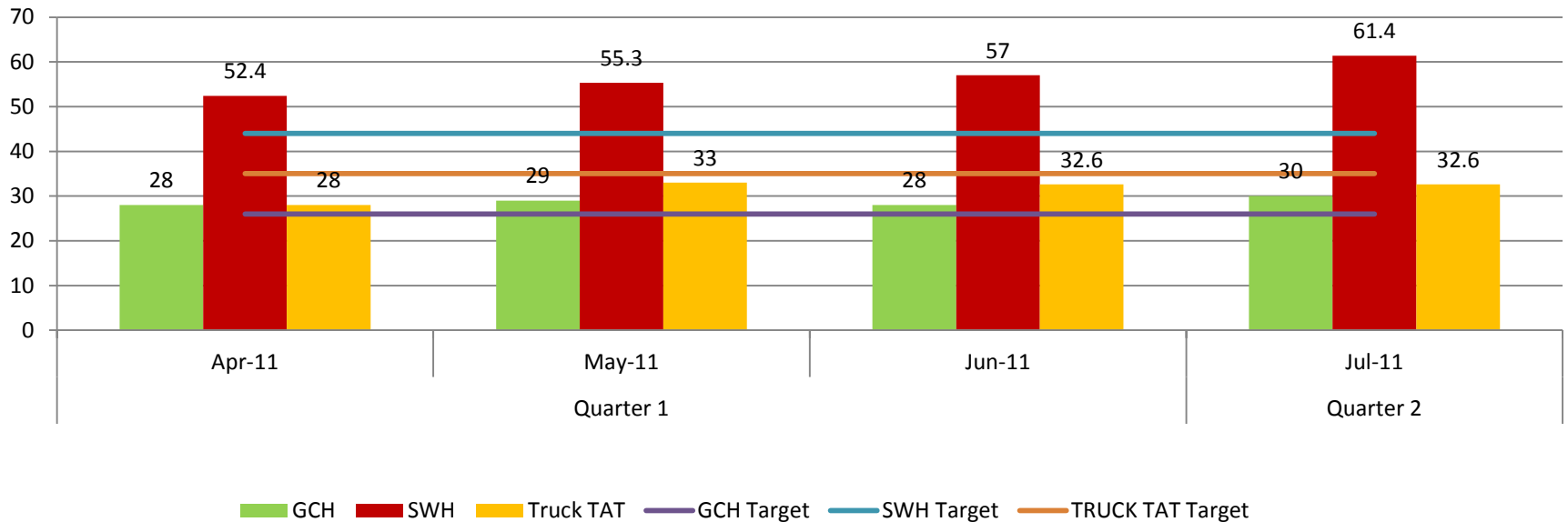
- **Navis . CTCT Operating system.**
 - Launched in Sep 2009
 - Upgraded in Mar 2010/2011
 - Stability > 97%
 - **Refcon. Reefer Monitoring System**
 - Launched in 2008
 - SMS & EMAIL Containers out of protocol to all shipping lines.
 - Advantages include
 - Visibility for customers via web based product.
 - Improved management of Reefers with (1) professional (IT) diagnostics tools; (2) 4 hour continuous updates of the recordings.
 - Improved Operator productivity – customers, PPECB and TPT.
 - Review expansion to the rest of the Terminal.
 - Future:
 - Explore energy saving opportunity (Quest)

Operational Performance

TPT CAPE TOWN PERFORMANCE STATS

APRIL 2011 – JULY 2011

QTR	Date	GCH	GCH Target	SWH	SWH Target	Truck TAT	TRUCK TAT Target	TEU's Handled	BERTH Occ	Vessel TAT HRS	Port TAT HRS
Quarter 1	Apr-11	28	26	52.4	44	28	35	48154	48%	17.42	22.3
	May-11	29	26	55.3	44	33	35	50236	52%	14.2	17.4
	Jun-11	28	26	57	44	32.6	35	49843	50%	13.03	18.51
Quarter 2	Jul-11	30	26	61.4	44	32.6	35	45674	46.4%	11.98	15.52
	Aug-11		26		44		35				
	Sep-11		26		44		35				
Quarter 3	Oct-11		26		44		35				
	Nov-11		26		44		35				
	Dec-11		26		44		35				
Quarter 4	Jan-12		26		44		35				
	Feb-12		26		44		35				
	Mar-12		26		44		35				
AVG YTD		29		56.5		31.6		48477	49.1%	14.2	18





Auto gate 2012 - 2013:



Gate Turn Around Time

- Current target 35 Minutes for truck turnaround at the terminal.
- Initiatives under consideration incl:
 - Review of landside operating hrs with a view to consolidating labor during peak hrs and offering an improved service. Targeted for GP traffic only.
 - Reefer containers (West coast) separate gate.
 - Installing truck directional Electronic Boards at the new gate.
 - Formulating a specialized body, comprising of relevant stakeholders and coming up with a multi – pronged proposal to alleviate traffic.
 - Medium Term – will move to full Auto gate terminal.
 - No CTO required
 - Shipping line to Pre advice export containers and release import containers.

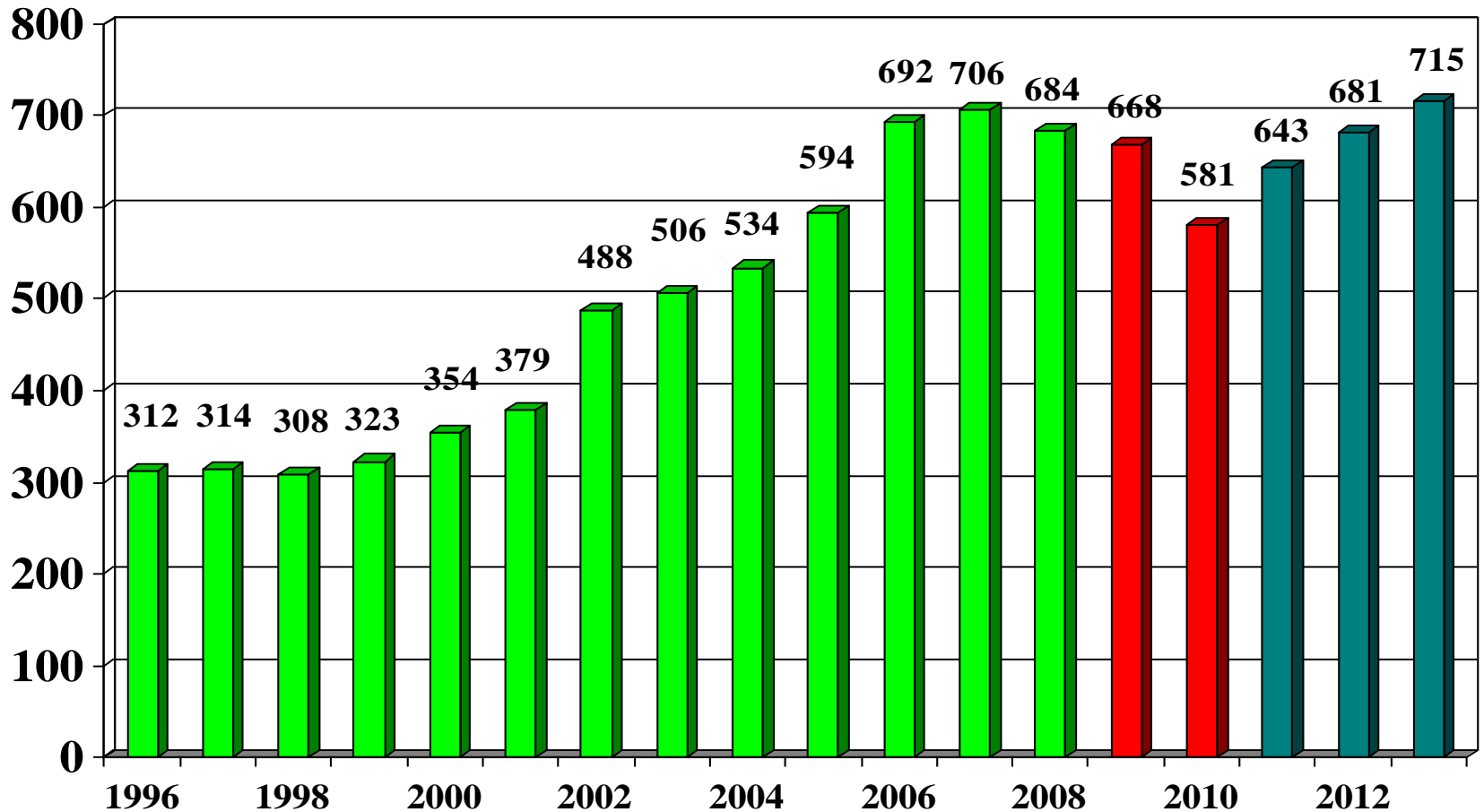
Volume Overview

CTCT Volume Overview

TRANSNET



delivering on our commitment *to you* port terminals

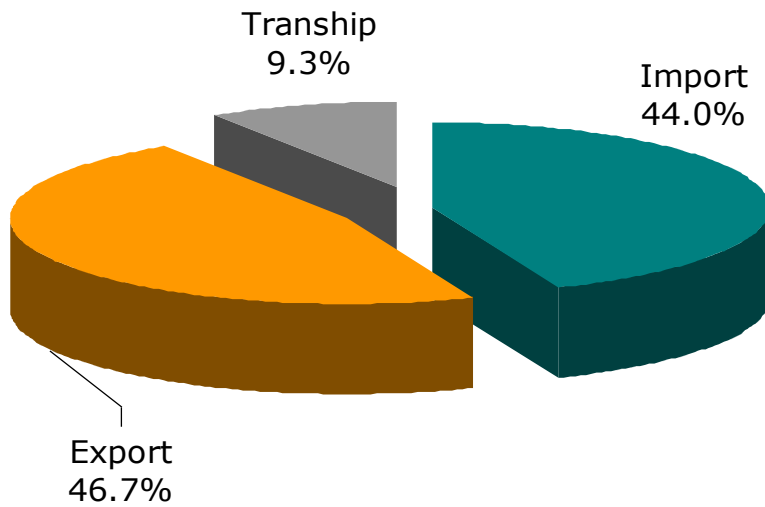


Terminal Volume Splits & Modes

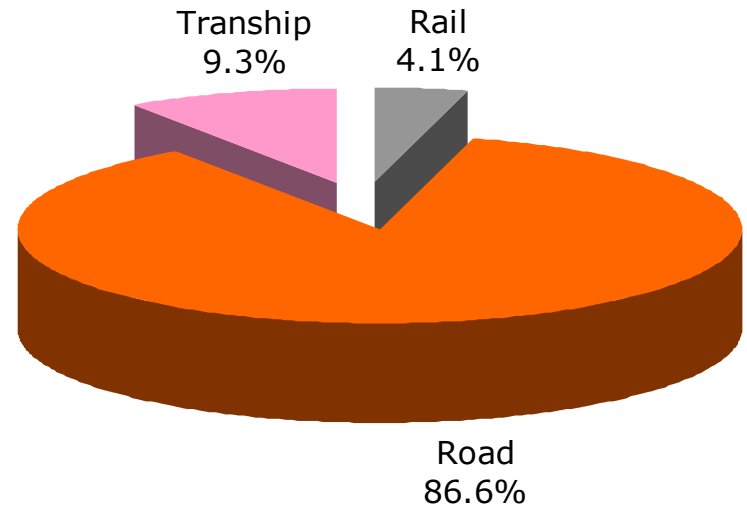
TRANSNEF



delivering on our commitment *to you* port terminals



CONTAINER SPLIT



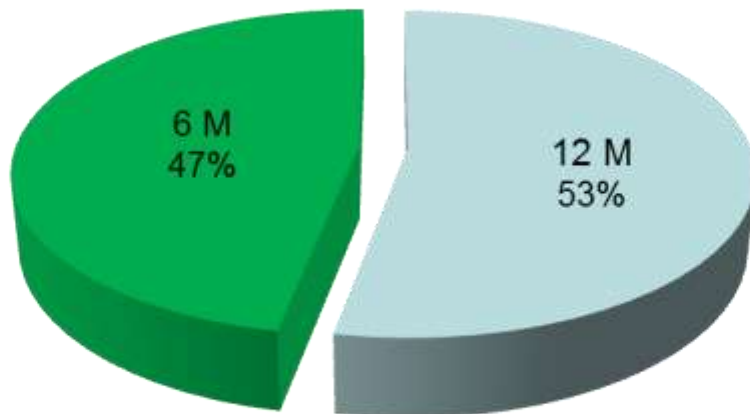
CONTAINER MODE

Terminal Volume 6 & 12 Meter Ratios and Commodity Mix

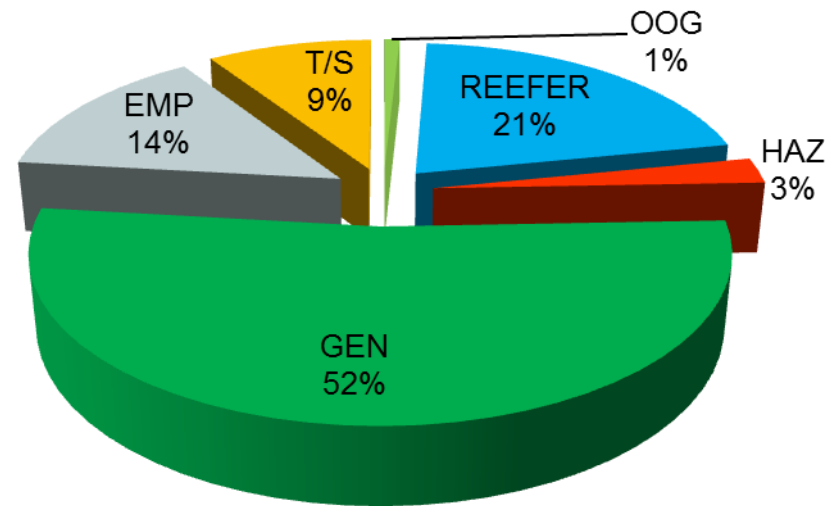
TRANSNET



delivering on our commitment *to you* port terminals



6 & 12 Meter Ratios



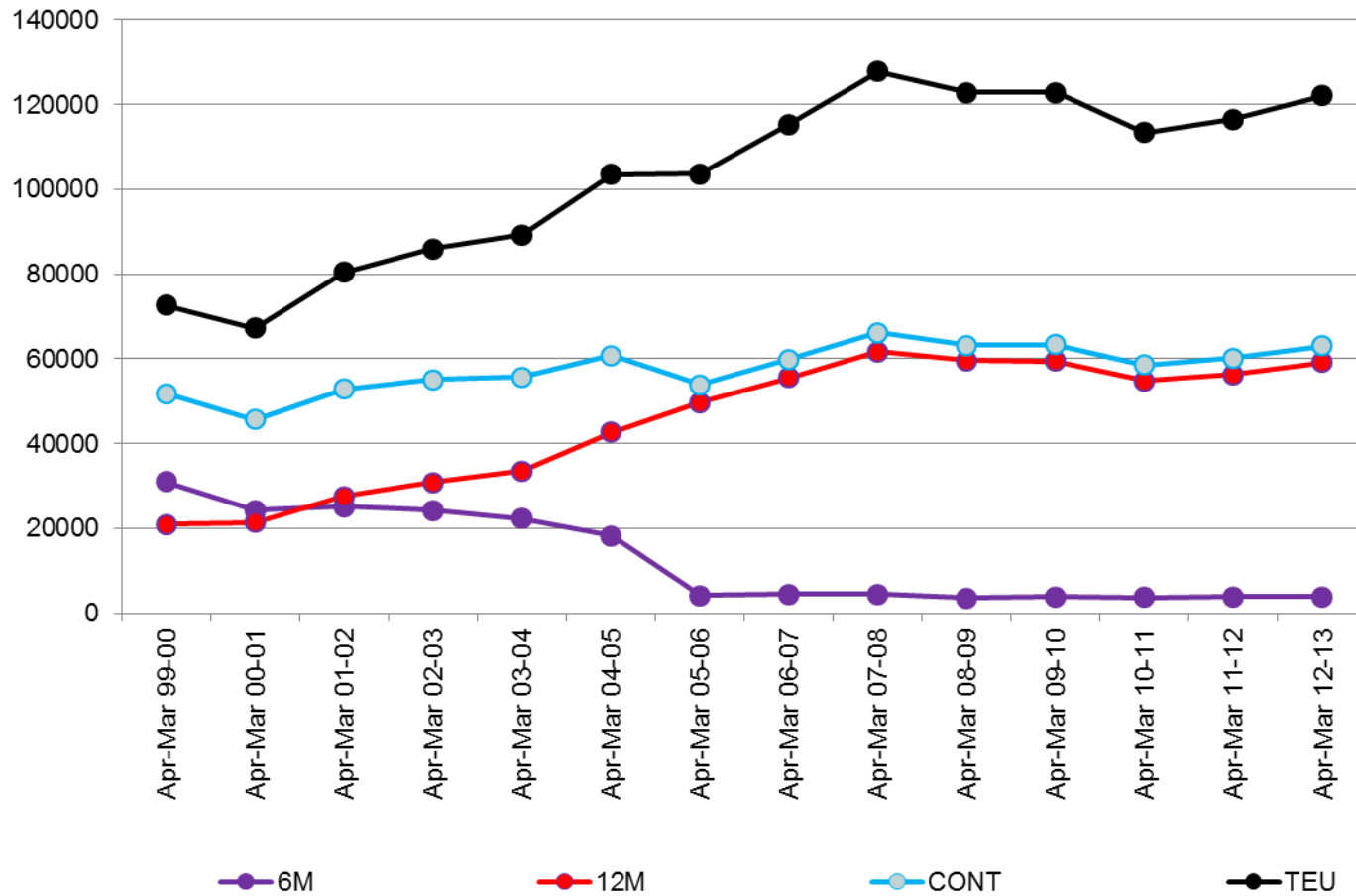
COMMODITY MIX

Reefer Volumes 6M - 12M – Containers - TEU

TRANSNET



delivering on our commitment *to you* port terminals



Project: Reefer Plan

Plug Points

West Coast	1041
Block 1	864
Block 2	912
Block 3	936
TOTAL POINTS	3753



TRANSNET



delivering on our commitment **to you**

port terminals

Questions?