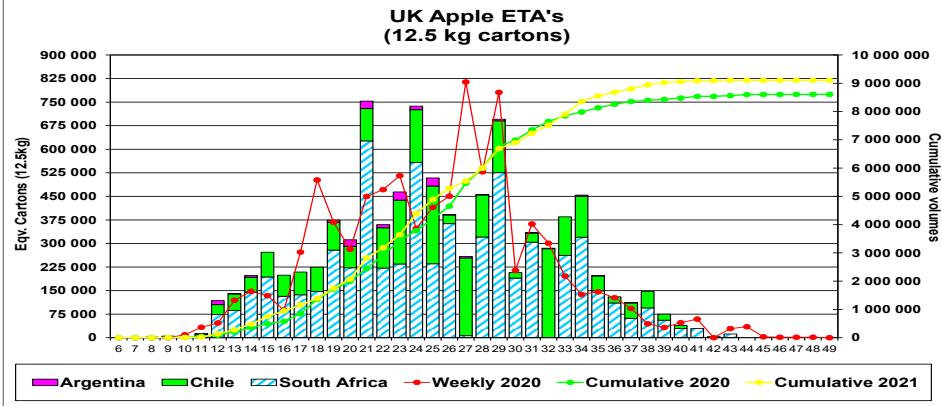


SH APPLE & PEAR EXPORTS

Apples and Pears Week 41 ETA Week 43 (2021)

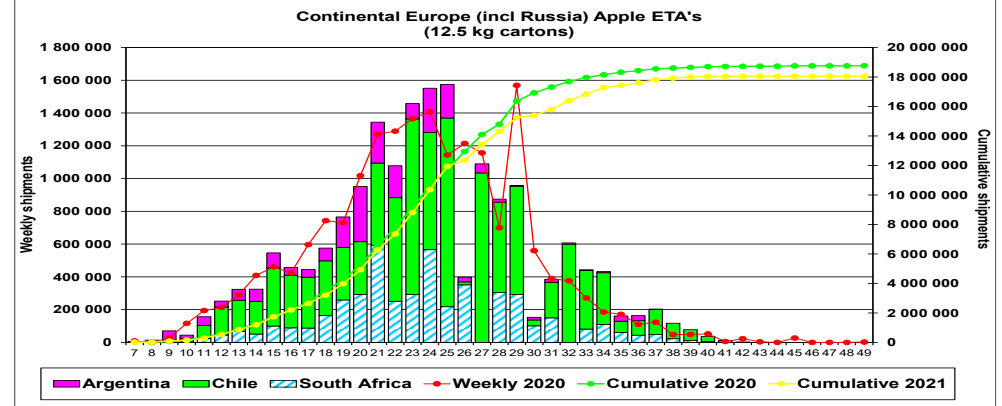


United Kingdom

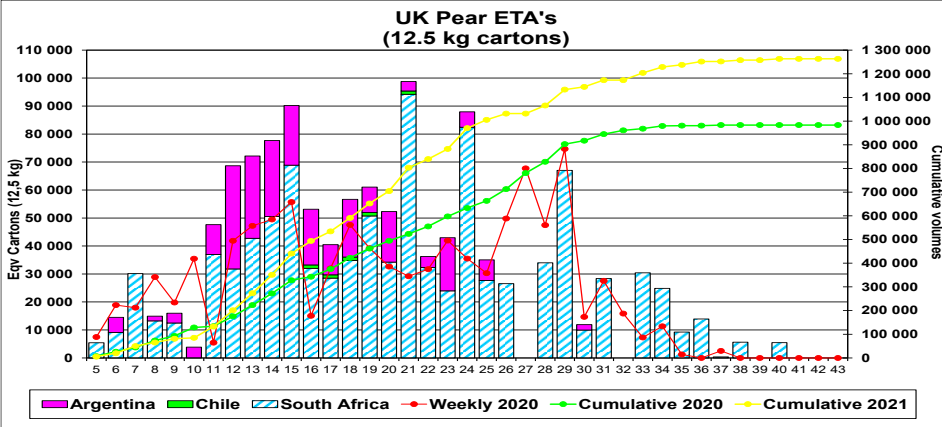


Weekly volumes	2020	2021	Difference	
ETA Week 43	28 848	11 787	-17 062	-59%
Cumulative volumes				
ETA Week 1 -43	8 564 335	9 103 973	539 638	6%

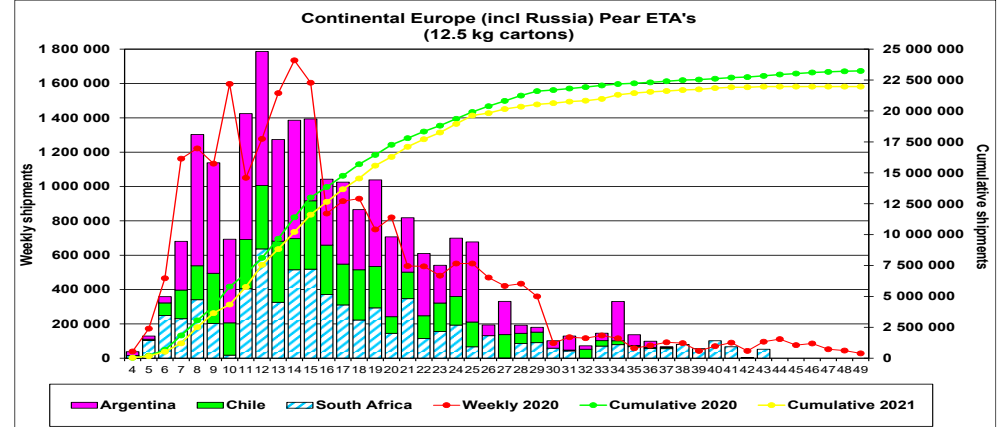
Continental Europe (including Russia)



Weekly volumes	2020	2021	Difference	
ETA Week 43	3 482	-	-3 482	-100%
Cumulative volumes				
ETA Week 1 -43	18 734 358	18 049 663	-684 694	-4%



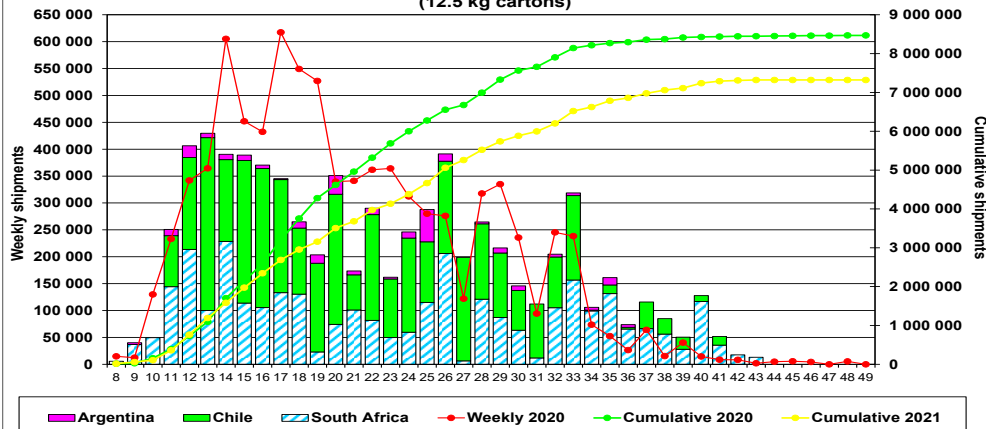
Weekly volumes	2020	2021	Difference	
ETA Week 43	-	-	-	0%
Cumulative volumes				
ETA Week 1 -43	983 402	1 263 136	279 735	28%



Weekly volumes	2020	2021	Difference	
ETA Week 43	96 015	52 427	-43 588	-45%
Cumulative volumes				
ETA Week 1 -43	22 838 497	21 973 317	-865 179	-4%

Middle East

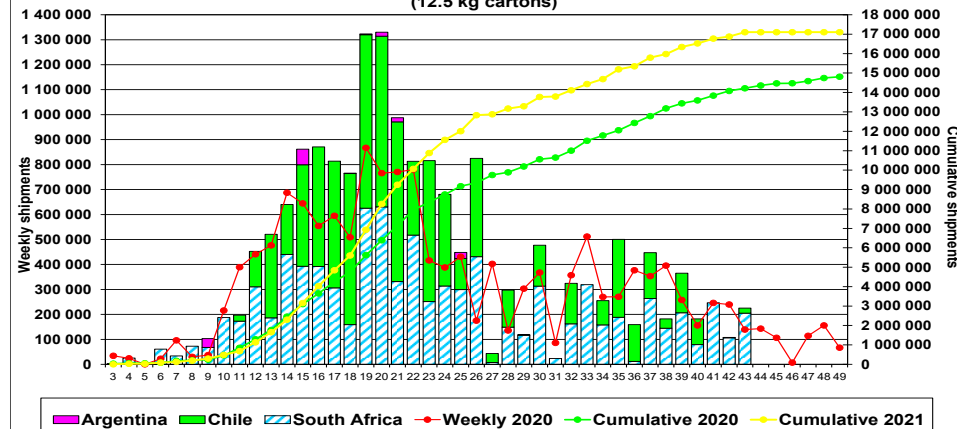
Middle East Apple ETA's
(12.5 kg cartons)



Weekly volumes	2020	2021	Difference	
ETA Week 43	1 769	13 114	11 345	641%
Cumulative volumes				
ETA Week 1- 43	8 449 250	7 322 529	-1 126 721	-13%

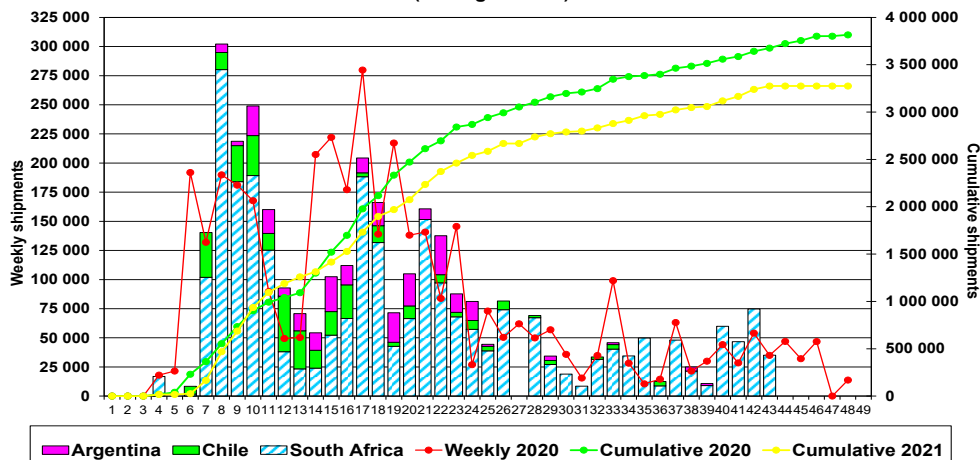
Far East & Asia

Far East & Asia Apple ETA's
(12.5 kg cartons)



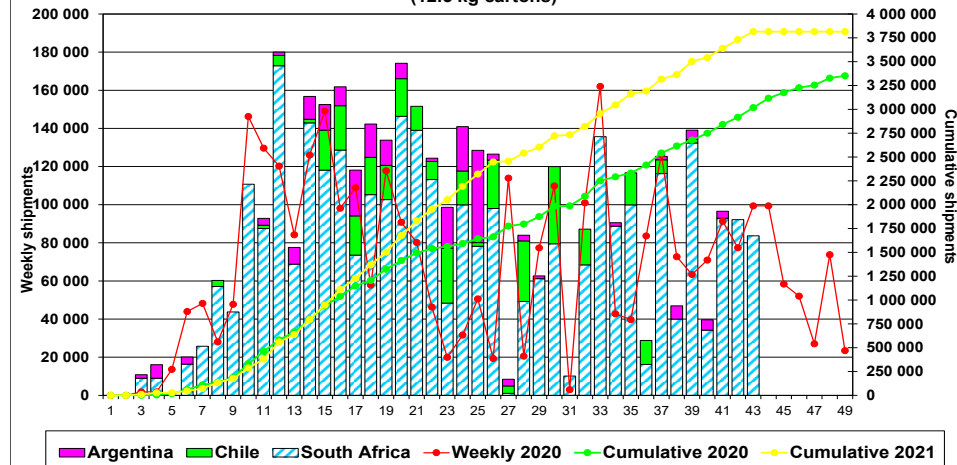
Weekly volumes	2020	2021	Difference	
ETA Week 43	139 289	225 124	85 835	62%
Cumulative volumes				
ETA Week 1- 43	14 217 035	17 102 817	2 885 782	20%

Middle East Pear ETA's
(12.5 kg cartons)



Weekly volumes	2020	2021	Difference	
ETA Week 43	34 940	35 062	122	0%
Cumulative volumes				
ETA Week 1- 43	3 676 177	3 275 110	-401 067	-11%

Far East & Asia Pear ETA's
(12.5 kg cartons)



Weekly volumes	2020	2021	Difference	
ETA Week 43	99 365	83 709	-15 656	-16%
Cumulative volumes				
ETA Week 1- 43	3 017 408	3 815 019	797 611	26%