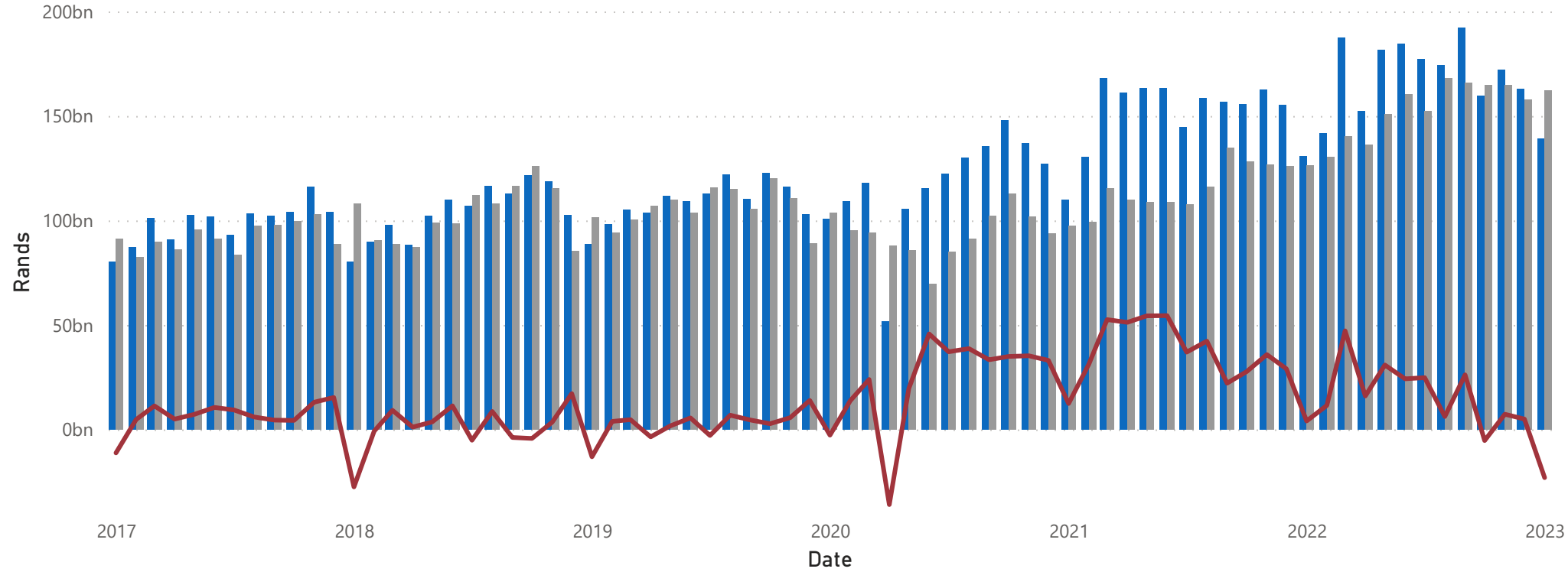


## SARS Data: Exports, Imports & Trade Balance (Rands)

● SARS Exports Value ● SARS Imports Value ● SARS Trade Balance



## South African Trade & Shipping Report

Jan 2023

## SARB Data: Rand per US Dollar by Date



| Month    | Exports MoM% | Exports YoY% | Imports MoM% | Imports YoY% | Exports YTD YoY% | Imports YTD YoY% |
|----------|--------------|--------------|--------------|--------------|------------------|------------------|
| November | 7.79%        | 5.65%        | -0.11%       | 29.72%       | 10.67%           | 32.45%           |
| December | -5.32%       | 4.95%        | -4.15%       | 25.14%       | 10.18%           | 31.78%           |
| Month    | Exports MoM% | Exports YoY% | Imports MoM% | Imports YoY% | Exports YTD YoY% | Imports YTD YoY% |
| January  | -14.42%      | 6.68%        | 2.89%        | 28.32%       | 6.68%            | 28.32%           |

*All data provided is the sole property of Linernet and onward use or distribution is not permitted without approval.*

Visit: [linernet.net](http://linernet.net)

1.



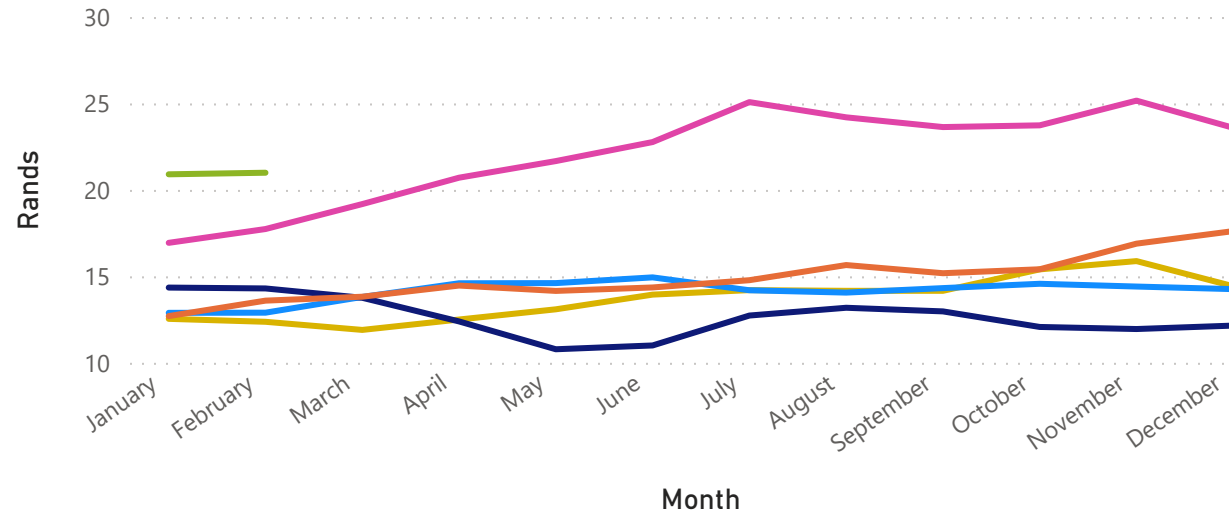
# South African Trade & Shipping Report

Jan 2023



DoE Data: Diesel Price by Year

Year ● 2018 ● 2019 ● 2020 ● 2021 ● 2022 ● 2023



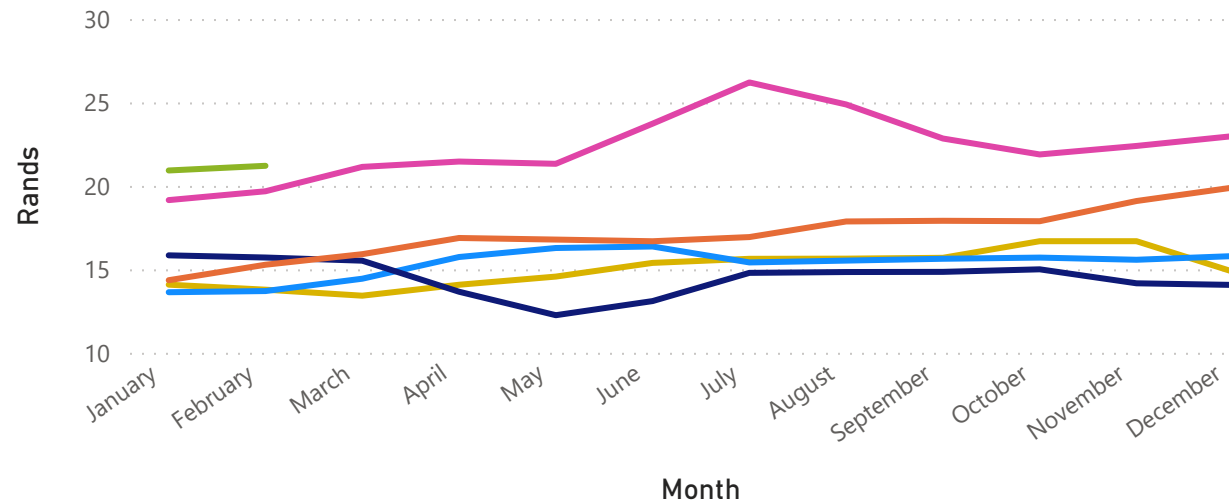
Diesel - 0.05% Sulphur

| Month    | Inland Price | Inland Price MoM% | Inland Price YoY% |
|----------|--------------|-------------------|-------------------|
| January  | 21.23        | -11.24%           | 23.09%            |
| February | 21.32        | 0.43%             | 18.15%            |

| Month    | Coastal Price | Coastal Price MoM% | Coastal Price YoY% |
|----------|---------------|--------------------|--------------------|
| January  | 20.58         | -11.56%            | 23.72%             |
| February | 20.67         | 0.45%              | 18.58%             |

DoE Data: Petrol price by Year

Year ● 2018 ● 2019 ● 2020 ● 2021 ● 2022 ● 2023



Petrol - 95 Octane ULP

| Month    | Inland Price | Inland Price MoM% | Inland Price YoY% |
|----------|--------------|-------------------|-------------------|
| January  | 21.40        | -8.78%            | 9.13%             |
| February | 21.68        | 1.31%             | 7.65%             |

| Month    | Coastal Price | Coastal Price MoM% | Coastal Price YoY% |
|----------|---------------|--------------------|--------------------|
| January  | 20.75         | -9.03%             | 9.85%              |
| February | 21.03         | 1.35%              | 8.29%              |

All data provided is the sole property of Linernet and onward use or distribution is not permitted without approval.

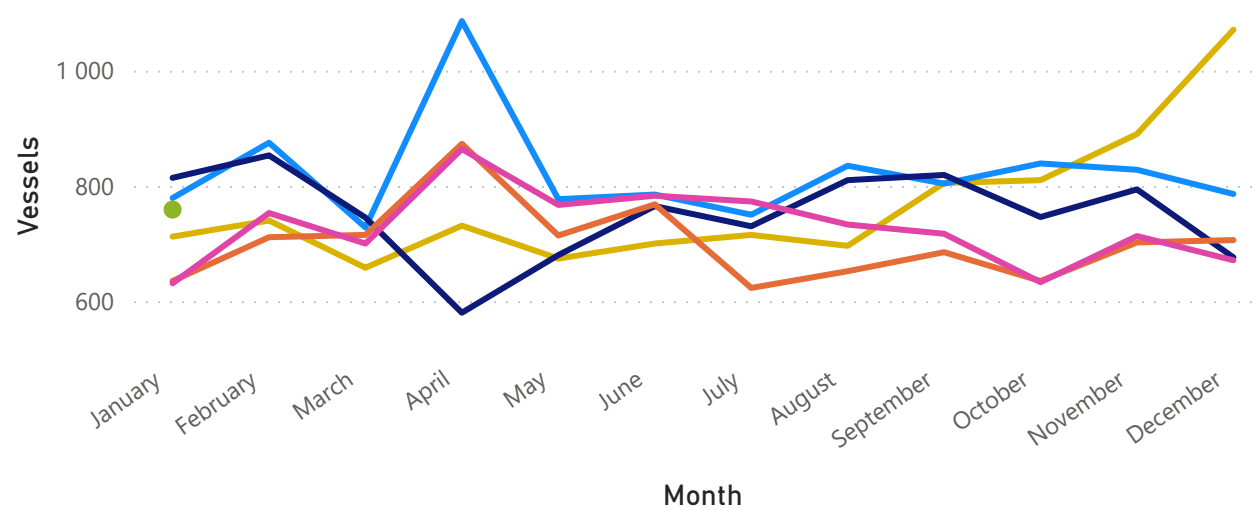
# South African Trade & Shipping Report

Jan 2023



TNPA Data: Total Vessel Calls at All SAF Ports by Year

Year ● 2018 ● 2019 ● 2020 ● 2021 ● 2022 ● 2023



Total Vessel Calls

| Month    | Vessel Calls | MoM%   | YoY%   | YTD Calls | YTD Calls YoY% |
|----------|--------------|--------|--------|-----------|----------------|
| December | 671          | -5.89% | -4.96% | 8 738     | 3.79%          |
| January  | 759          | 13.11% | 20.29% | 759       | 20.29%         |

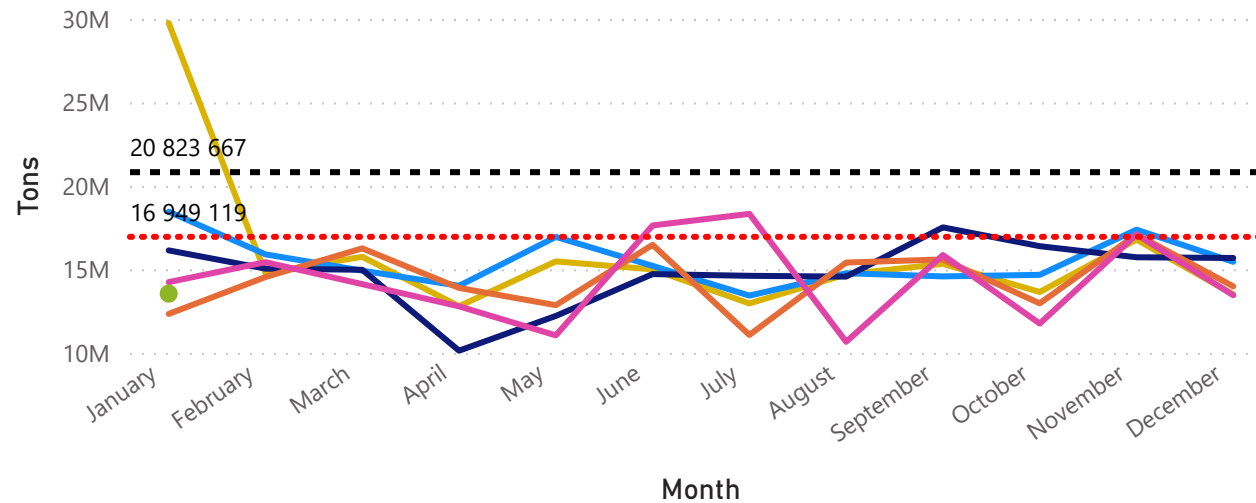
**Legend**

- Designed or Theoretical) Capacity
- Installed or Actual Capacity

See Port Capacity Glossary

TNPA Data: Dry Bulk Volumes (Tons) Through all SAF Ports by Year

Year ● 2018 ● 2019 ● 2020 ● 2021 ● 2022 ● 2023



Dry Bulk Volumes

| Month    | Tons       | MoM%    | YoY%   | YTD Tons    | YTD Tons YoY% |
|----------|------------|---------|--------|-------------|---------------|
| December | 13 448 464 | -21.31% | -3.81% | 172 377 517 | -0.04%        |
| January  | 13 545 967 | 0.73%   | -4.85% | 13 545 967  | -4.85%        |

All data provided is the sole property of Linernet and onward use or distribution is not permitted without approval.

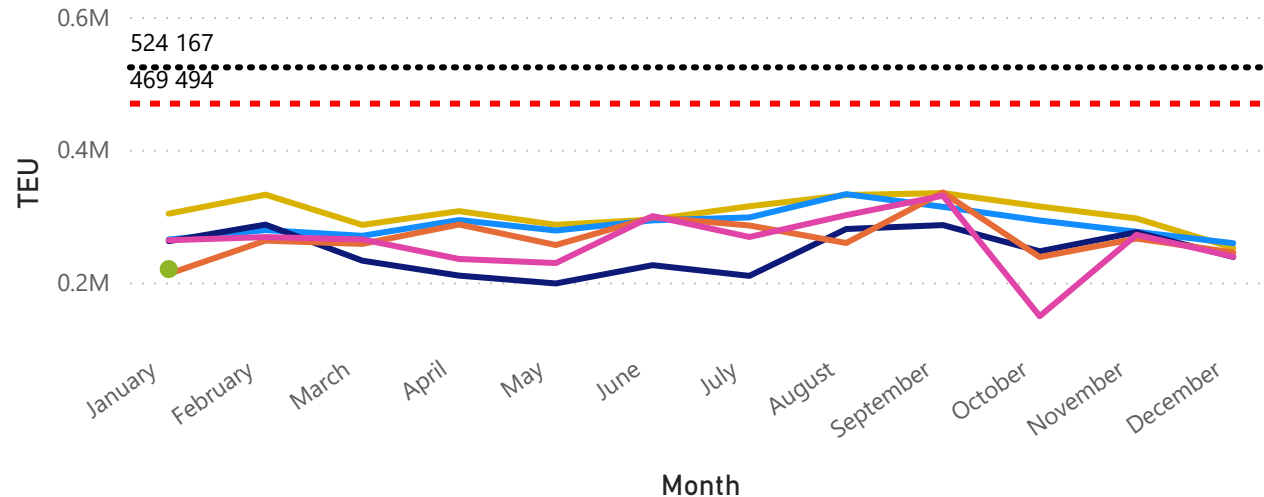
# South African Trade & Shipping Report

Jan 2023



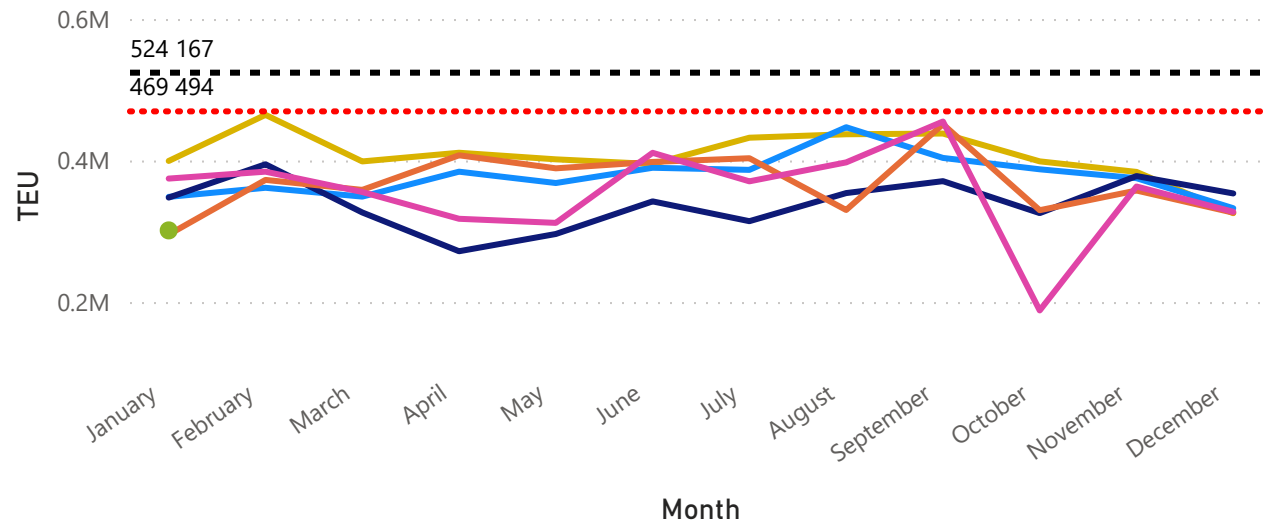
TNPA Data: Full Container Volumes (TEU) Through all SAF Ports by Year

Year ● 2018 ● 2019 ● 2020 ● 2021 ● 2022 ● 2023



TNPA Data: Total Container Volumes (TEU) Through all SAF Ports by Year

Year ● 2018 ● 2019 ● 2020 ● 2021 ● 2022 ● 2023



Full Container Volumes

| Month    | TEU     | MoM%    | YoY%   | YTD TEU   | YTD TEU YoY% |
|----------|---------|---------|--------|-----------|--------------|
| December | 238 960 | -12.08% | -2.51% | 3 121 954 | -2.64%       |

| Month   | TEU     | MoM%   | YoY%    | YTD TEU | YTD TEU YoY% |
|---------|---------|--------|---------|---------|--------------|
| January | 220 147 | -7.87% | -16.48% | 220 147 | -16.48%      |

**Legend**

- Designed or Theoretical) Capacity
- ..... Installed or Actual Capacity

See Port Capacity Glossary

Total Container Volumes

| Month    | TEU     | MoM%   | YoY%  | YTD TEU   | YTD TEU YoY% |
|----------|---------|--------|-------|-----------|--------------|
| December | 327 577 | -9.83% | 0.39% | 4 256 971 | -3.68%       |

| Month   | TEU     | MoM%   | YoY%    | YTD TEU | YTD TEU YoY% |
|---------|---------|--------|---------|---------|--------------|
| January | 301 272 | -8.03% | -19.55% | 301 272 | -19.55%      |

All data provided is the sole property of Linernet and onward use or distribution is not permitted without approval.

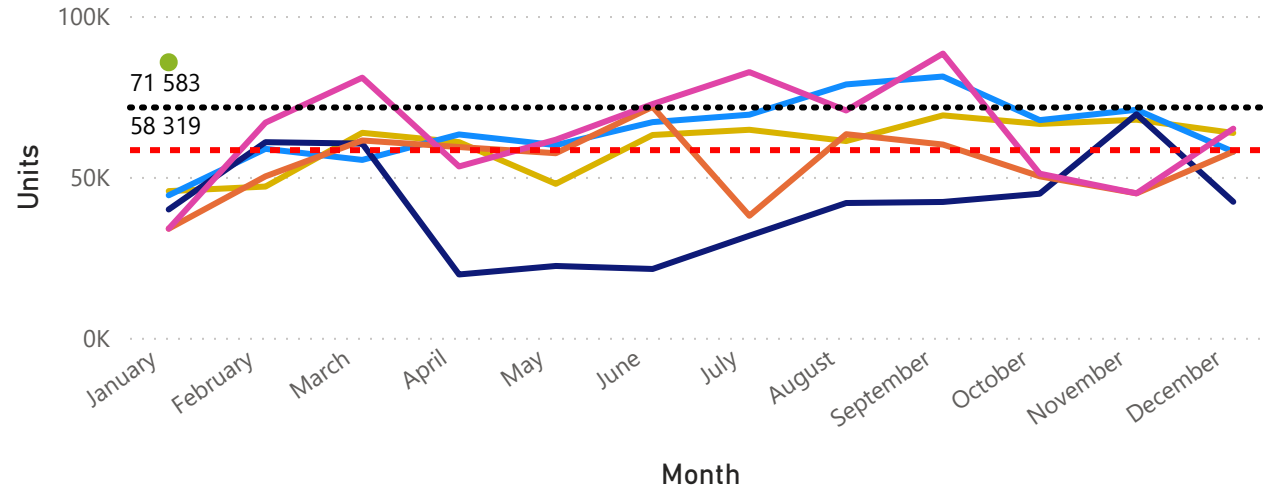
# South African Trade & Shipping Report

Jan 2023



TNPA Data: Vehicle Volumes (Units) Through all SAF Ports by Year

Year ● 2018 ● 2019 ● 2020 ● 2021 ● 2022 ● 2023



Vehicle Volumes

| Month    | Units  | MoM%   | YoY%    | YTD Units | YTD Units YoY% |
|----------|--------|--------|---------|-----------|----------------|
| December | 64 995 | 44.78% | 12.34%  | 771 521   | 19.05%         |
| Month    | Units  | MoM%   | YoY%    | YTD Units | YTD Units YoY% |
| January  | 85 625 | 31.74% | 152.54% | 85 625    | 152.54%        |

### Legend

- ..... Designed or Theoretical Capacity
- Installed or Actual Capacity

See Port Capacity Glossary

### Port Capacity Glossary

#### Designed or Theoretical Capacity:

- The maximum throughput that could be achieved assuming acceptable levels of congestion. **optimal** operator efficiencies and **optimal** equipment selection.

#### Installed or Actual Capacity:

- The maximum throughput that could be achieved assuming acceptable levels of congestion. **optimal** operator efficiencies and **current** equipment selection.

All data provided is the sole property of Linernet and onward use or distribution is not permitted without approval.